

THE **Journey** C H U R C H

LEADING PEOPLE TO FOLLOW JESUS LOVE GOD LOVE OTHERS

Ministry Year Highlights



Who are we
BECOMING?

www.onthejourney.ca



Who am I becoming? is a crucial question for everyone. Experiences, relationships, tests and trials are shaping forces in our lives. Yet the roots of change come from a more profound source. The promise and intention of God is that anyone who belongs to Christ has become a new person. “The old life has gone; a new life has begun.” (2 Cor 5:7) The Holy Spirit produces this kind of fruit in our lives: love, joy, peace, patience, kindness, goodness, faithfulness, gentleness and self control. (Galatians 5:22-23).

Who are we becoming? That is a crucial question for our church. The Bible says we are the light of the world. We are called to love. We are to be a people of hope. We are givers not takers. We are forgivers and peacemakers. We are servants. We are sinners saved by God’s grace. We are to become people who lead others to follow Jesus, love God and love others!

The journey of following Jesus so we become more like Jesus is not automatic or easy. God is in the business of reconstitution not merely reconstruction; deep change, not merely a surface makeover. This requires our community at TJC to be a loving place where grace, truth and time is practised so that an environment of transformative change is created.

What we are becoming will shape what we do. At The Journey Church we need to ask, “What should we be doing that creates an atmosphere where God is using us to help people change in Christ?” From lost to found, broken to healed, addicted to free, anger to peace, despair to hope and ashamed to accepted. What new stories will we tell one another that show we are being shaped by the greatest story ever told?

In this coming ministry year our focus will center on this question - “**Who are we becoming?**” To answer this well requires fresh imagination and a firm grasp on why we exist. I look forward to asking, listening and visioning with others, “What will our church become and what will our church do when people are permeated with the love of Christ?”

Rev. David Morehouse, Lead Pastor

The Scriptures refer to the Church as the ‘bride of Christ’ and so clearly, as believers, there can be no greater privilege than to be formally involved in any acts of service to His bride.

On behalf of all the board members of The Journey Church thank you for the privilege, blessing, and challenge of being part of your Board during the 2012-13 ministry year.

Having been appointed to this role by the church members, we feel called to work with the Lead Pastor to help set and maintain reasonable and responsible policies, which we trust can provide direction, protection, and accountability as we seek to honour and obey Christ, our Saviour and Lord, within the work we do together as His church.



Dr. Seth Crowell, Board Chair

38 New Members

25 - BELIEVER'S BAPTISM; 8 TRANSFERS; 5 BY EXPERIENCE

Rooted

YOUTH DISCIPLESHIP GROUP HAS GROWN FROM 8 TO 23

Holding the Ropes

7TH YEAR OF BEING A MAJOR SUPPORTER OF THE SOUCYS

125* CHILDREN SPONSORED THROUGH WORLD VISION BY FAMILIES IN OUR CHURCH (*APPROXIMATED)

Team Rwanda SENT A TEAM OF 6 TO WORK WITH THE SOUCYS IN OCT. 2012

Renovations

NEW CABINETS, SINK & COUNTERTOP AT BRENTWOOD CAMPUS
FLOORING AND MEDIA BOOTH UPGRADES AT ALLISON CAMPUS

Purposes: BELONG * SHARE * GROW * SERVE * WORSHIP

Tidal Impact

19 YOUTH BEGAN TRAINING IN JANUARY IN ORDER TO GO ON A MISSION TRIP - SUMMER 2013

427*

SMALL GROUP QUESTIONS CREATED BY OUR TEACHING PASTOR

Men's Ministry MONTHLY FELLOWSHIP GATHERINGS & OTHER OUTINGS

NEXTGEN LEADERS RAISED OVER \$2103 FOR 30HR FAMINE **NGL**

JHL A NEW SPORT MINISTRY BALL HOCKEY LEAGUE FOR CHILDREN & YOUTH

New Staff

LARRY CORNELL, IT MANAGER & PENNY FAWCETT, SUPPORT STAFF

Guest Speakers: Don Simmonds * Dr. Bruce Fawcett * Dave Toycen

Who Are We Becoming?

CELEBRATING THE 2012-2013 MINISTRY YEAR AT THE JOURNEY CHURCH

Values: GENEROSITY * EQUIP * OUTWARD * FAITH@HOME

Hospitality Teams

A NEW SYSTEM FOR WARMLY WELCOMING PEOPLE AT OUR CHURCH

15 SMALL GROUPS FOR YOUTH & ADULTS

Message Series

INCLUDES CLOSE CALLS, 5 EASY STEPS TO WRECK YOUR LIFE, GROWING UP, LOVE-GIVE-GROW, WHY JESUS, FAILING FORWARD & MORE

\$12,395 CHRISTMAS OFFERING FOR GUARDIANS OF HOPE KITS

AMOUNT RECEIVED TO OUR GENERAL FUND **\$531,000**

NextGen Vision \$24,500 RECEIVED FOR SPECIAL RENOVATION PROJECT

Digital Presence

CREATING NEW DIGITAL SPACE - ONTHEJOURNEY.CA

Seminars: Christianity 101 * Belong * Discover Your Design * Starting Point

90 CHILDREN ATTENDED VACATION BIBLE CAMP 2012

2 CHORAL EVENTS
4 CHRISTMAS EVE SERVICES
9 WORSHIP LEADERS
50 INSTRUMENTALISTS, VOCALISTS, TECH & DESIGN
158 WORSHIP SERVICES PLANNED, PRACTICED & PRAYED OVER

Worship Arts

Church Community Builder

A NEW DATABASE MANAGEMENT SYSTEM CONNECTING THE MEMBERS, ATTENDERS AND NEWCOMERS.

Total Mission Giving

77,594 CHURCH GIVING
60,000* WORLD VISION CHILD SPONSORSHIPS (*APP.)
\$137,594

324 RECORD ATTENDANCE AT CHICK-FIL-A LEADERCAST EVENT
10TH ANNIVERSARY OF BEING HOSTED BY TJC

REAL AND LASTING CHANGE

By giving regularly to God's Work at The Journey Church, you joined a wide-reaching community of people working to lead people to follow Jesus, love God and love others.

2012-2013 Year End Financial Report (draft)

Revenue	General	Designated	Total
General Fund	\$531,243		\$531,243
Missions Fund		\$53,436	\$53,436
Special Projects Fund		\$37,018	\$37,018
Community Care Fund		\$11,203	\$11,203
Building Fund		\$1,147	\$1,147
Event Revenue	\$32,438	\$5,151	\$37,589
Other Revenue	\$51,201	\$4,117	\$55,318
Total Revenue	\$614,882	\$112,072	\$726,954

Expenditures	General	Designated	Total
Missions	\$10,919	\$66,675	\$77,594
Worship	\$6,347	\$855	\$7,202
Evangelism	\$17,539	\$1,500	\$19,039
Ministry	\$19,852	\$1,195	\$21,047
Teaching	\$14,467	\$8,334	\$22,801
Fellowship	\$7,580	\$	\$7,580
Administration	\$20,233	\$450	\$20,683
Facilities	\$138,100	\$28,323	\$166,423
Personnel	\$374,824	\$3,122	\$377,946
Total Expenditures	\$609,861	\$110,454	\$720,315
Excess of revenue over expenditures	\$5,021	\$1,618	\$6,639

Your gifts to the General Fund provided children with art supplies, curriculum and a warm environment during March Break Camp 2013.



Other Financial Considerations

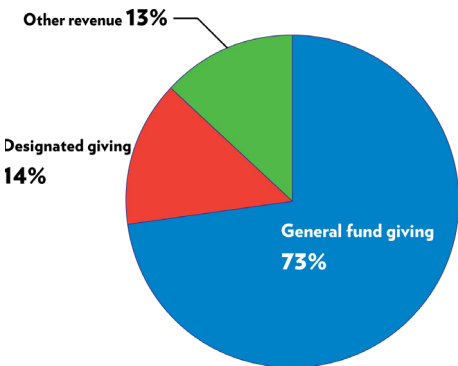
Cash on hand (<i>chequing account as of May 31, 2013; \$19, 543.51 outstanding</i>)	\$27,431.33
Savings Account (<i>designated funds as of May 31, 2013</i>)	\$80,000.11
Contingency	\$30,071.38
Missions Fund	\$500.00
Special Projects Fund	\$39,801.90
Community Care Fund	\$6,947.28
Building Fund	\$1,547.00
Kalande Family	\$155.00
Tidal Impact	\$977.55
Wood Gundy Account	\$27,323.48
<i>(as of May 31, 2013; \$19, 355.13 is for Kalande family)</i>	

DEBT

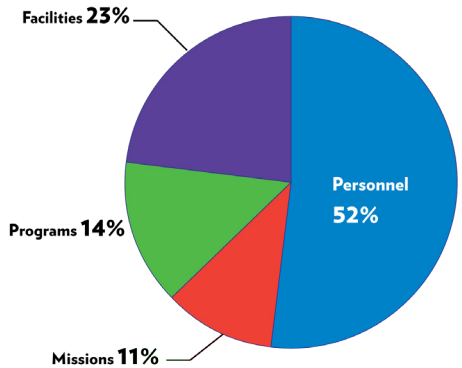
Allison Campus	\$192,864.16
<i>(1994 mortgage & 2008 operations loan; payment program is \$2,155 monthly)</i>	
Brentwood Campus	\$187,304.56
<i>(2008 multisite loan; payment program is \$1,943 monthly)</i>	
Total Debt as of May 31, 2013	\$380,168.72
<i>Amortization date for both loans is 2023.</i>	

BREAKING DOWN THE NUMBERS

2012-2013 Revenue



Actual 2012-2013 Expenditures



Proposed 2013-2014 Expenditures

